

SUITE INFORMATION

PROJECT ADDRESS: 1905 PARK MANOR BLVD, SUITE 500
PITTSBURGH, PA 15205

COUNTY: ALLEGHENY COUNTY

PARCEL ID: 335-A-25

LEASABLE SF: 2158 SF *BOMA RETAIL STANDARD

STORIES: 1 STORY

CEILING TYPE/HEIGHT: SEE PLAN

BOTTOM OF JOIST: UNVERIFIED

BOTTOM OF DECK: UNVERIFIED

FIRE PROTECTION: SPRINKLERED

ELECTRIC PANEL A: 225 AMP, 480Y/277 VOLTS 3 PHASE 4 WIRE

ELECTRIC PANEL B: 100 AMP, 208Y/120 VOLTS 3 PHASE 4 WIRE

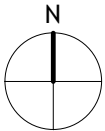
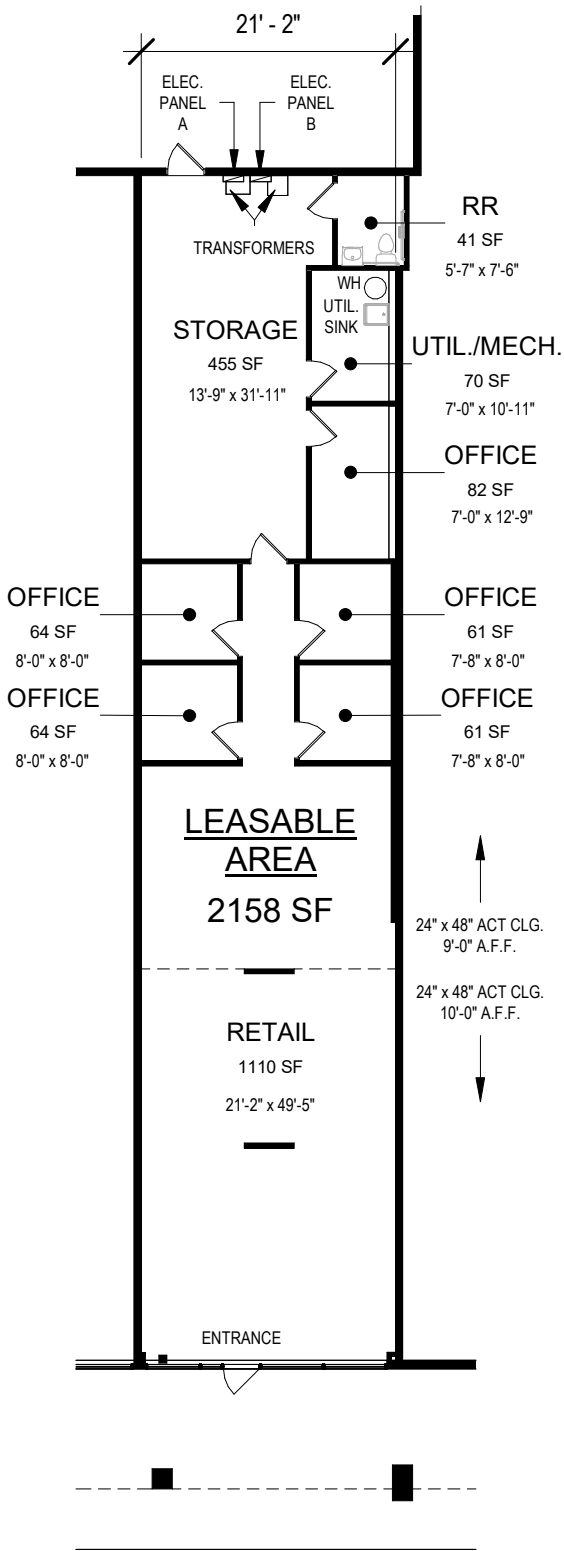
***NOTE:**

EXISTING CONDITIONS HAVE BEEN CAPTURED AND DOCUMENTED VIA MATTERPORT PRO (2 OR 3) CAMERA. SEE TABLE BELOW FOR CAMERA ACCURACY. CONTRACTOR TO VERIFY ALL DIMENSIONS IN FIELD.

CAMERA ACCURACY SPECS PROVIDED BY MATTERPORT, INC.

CAMERA	10m
--------	-----

MATTERPORT PRO 3	±20mm (0.2%)
------------------	--------------



NOT TO SCALE

ZAMAGIAS
PROPERTIES

SUITE 500

1905 PARK MANOR BLVD, SUITE 500
PITTSBURGH, PA 15205

04/02/26

**WILDMAN
CHALMERS**
DESIGN
WWW.WILDMANCHALMERS.COM
1622 LOWRIE ST PITTSBURGH PA 15212
PHONE 4 1 2 . 4 3 6 . 9 3 0 3